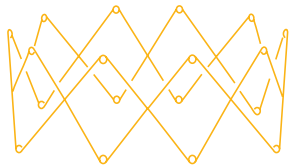


Medtronic

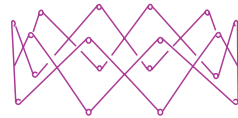
PROPEL™ mometasone furoate sinus implants

Strengthen your sinus surgery arsenal with the PROPEL family of implants

The PROPEL family of steroid-releasing implants are designed for use post-ethmoid, frontal or maxillary sinus surgeries, providing physicians a clinically proven solution for their patients.^{1,2,3}




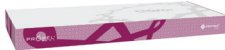


PROPEL™ mometasone furoate implant



PROPEL™ Mini mometasone furoate implant



PROPEL™ Contour mometasone furoate implant

Packaging	Implant	Delivery system	Delivery system tip diameter	Implant nominal height	Implant diameter	Sinus indication
	PROPEL mometasone furoate implant	Straight	5.2 mm	23 mm	50.0 mm	Ethmoid sinus
	PROPEL Mini mometasone furoate implant	Curved	4.0 mm	16 mm	42.5 mm	Ethmoid sinus and Frontal sinus opening
	PROPEL Mini mometasone furoate implant	Straight	4.0 mm	16 mm	42.5 mm	Ethmoid sinus
	PROPEL Contour mometasone furoate implant	Flexitip	2.8 mm	8 mm	15.5 mm	Frontal and maxillary Sinus ostia



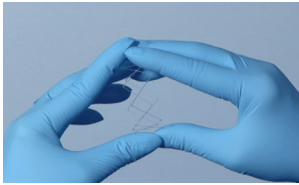
PROPEL™ mometasone furoate implant



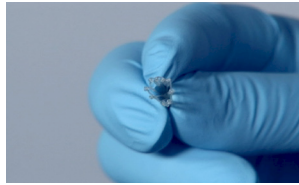
PROPEL™ Mini mometasone furoate implant



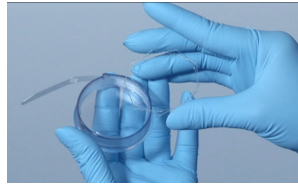
PROPEL™ Contour mometasone furoate implant



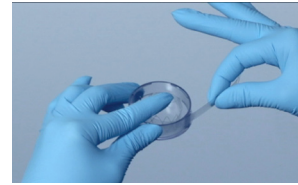
Step 1
Compress the implant circumferentially into a cylinder using all fingers



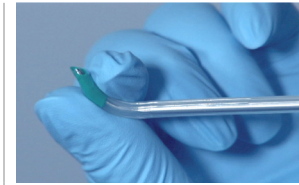
Step 2
Allow implant to "flower" with 3 fingers to ensure no twisted or crossed struts; re-crimp if cross struts occurs



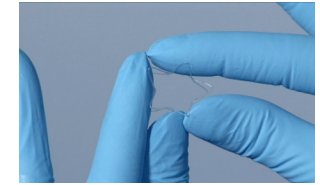
Step 1
Place implant inside crimping device



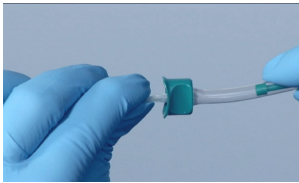
Step 2
Hover index finger over implant while slowly pulling "zip tie"



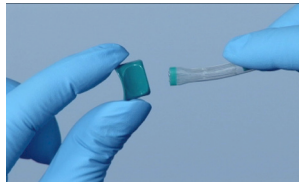
Step 1
Depress plunger and shape flexible tip to desired angle



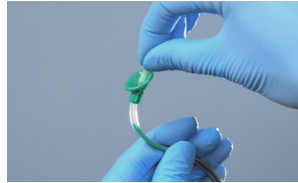
Step 2
Grasp implant between fingers of both hands and gently compress implant



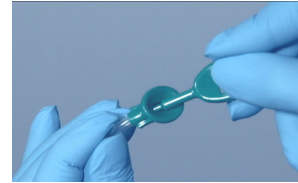
Step 3
Insert through funnel



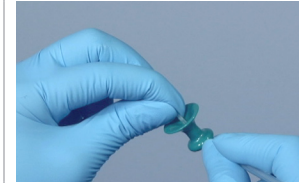
Step 4
Carefully remove funnel while pinching implant inside delivery system



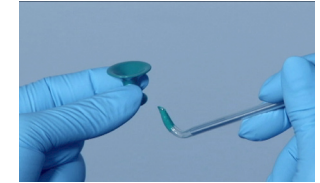
Step 3
Insert implant into delivery system with funnel facing superiorly



Step 4
Use loading tool to push through funnel then, pinch the applicator tip while removing funnel



Step 3
Insert compressed implant into the funnel



Step 4
Remove the funnel, and the delivery system is ready to be inserted with the tip facing superiorly

- Load PROPEL sinus implants no more than 3 minutes before use to maximize radial force
- Do not expose PROPEL implants to fluid or gels prior to use (do not dip in saline)
- PROPEL implants can be loaded twice, if needed

Medtronic

ENT
6743 Southpoint Drive N
Jacksonville, FL 32216
USA
Toll free: (800) 874-5797
Telephone: (904) 296-9600
Fax: (800) 678-3995

For complete instructions, warnings, and precautions, please refer to the instructions for use provided in each implant packaging or at PROPELopens.com.

The PROPEL sinus implants are intended to maintain patency and locally deliver steroid to the sinus mucosa in patients ≥ 18 years of age following sinus surgery: PROPEL for the ethmoid sinus, PROPEL Mini for the ethmoid sinus/frontal sinus opening, and PROPEL Contour for the frontal/maxillary sinus ostia. Contraindications include patients with confirmed hypersensitivity or intolerance to mometasone furoate (MF) or hypersensitivity to bioabsorbable polymers. Safety and effectiveness of the implant in pregnant or nursing females have not been studied. Risks may include, but are not limited to, pain/pressure, displacement of the implant, possible side effects of intranasal MF, sinusitis, epistaxis, and infection. For full prescribing information, see IFU at IntersectENT.com/technologies/. Rx only.

1. PROPEL™ [Instructions for Use]. Menlo Park, CA: Intersect ENT; 2020.
2. PROPEL™ Mini [Instructions for Use]. Menlo Park, CA: Intersect ENT; 2020.
3. PROPEL™ Contour [Instructions for Use]. Menlo Park, CA: Intersect ENT; 2020.